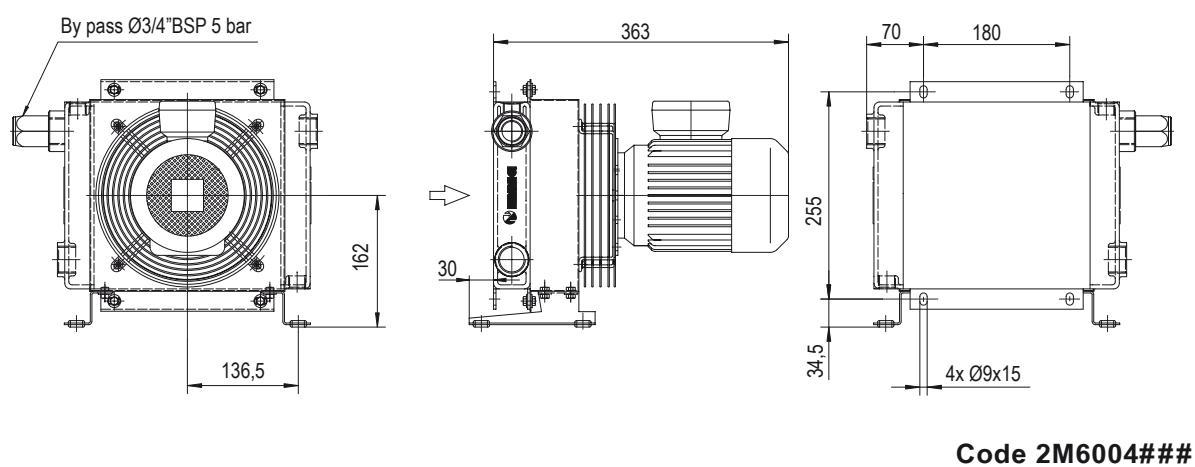
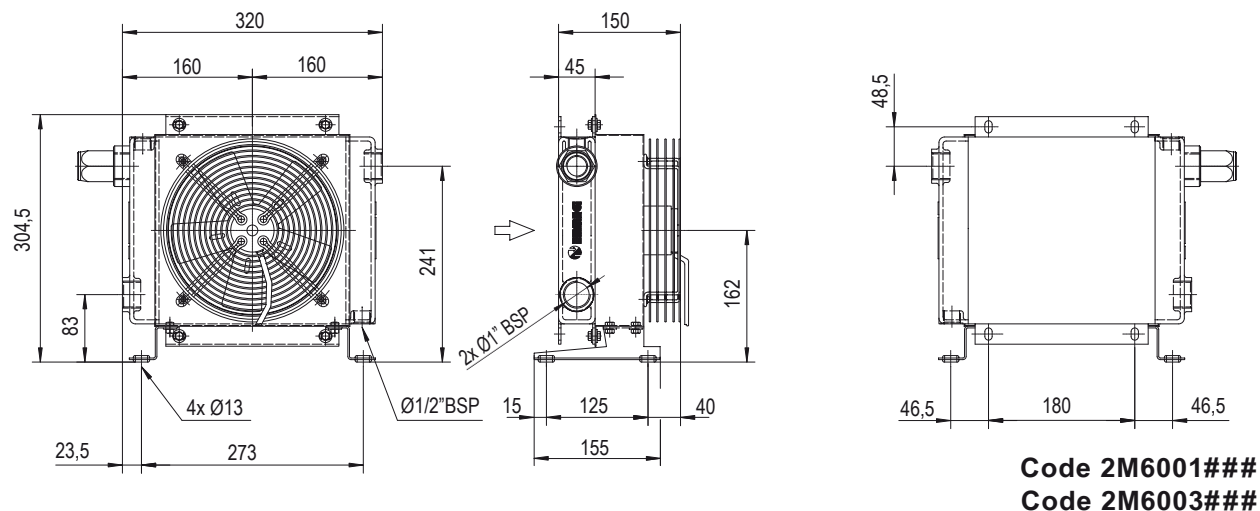


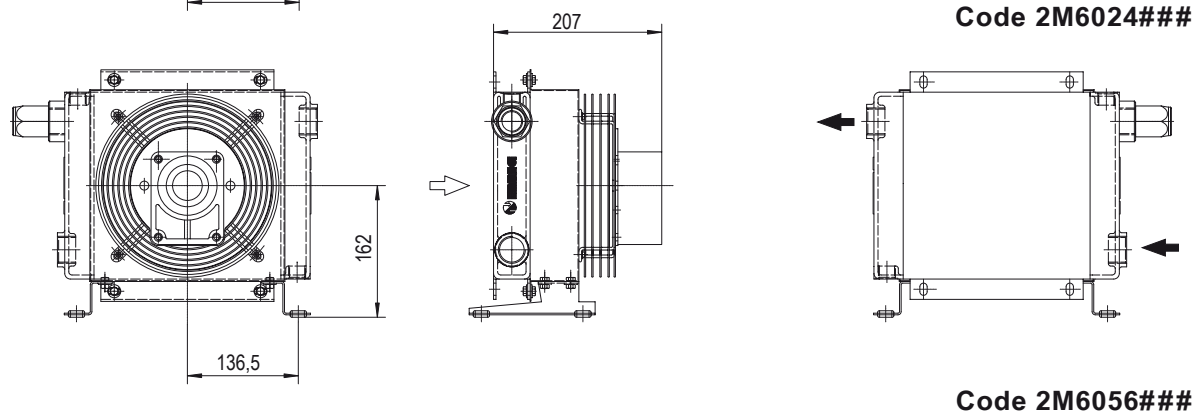
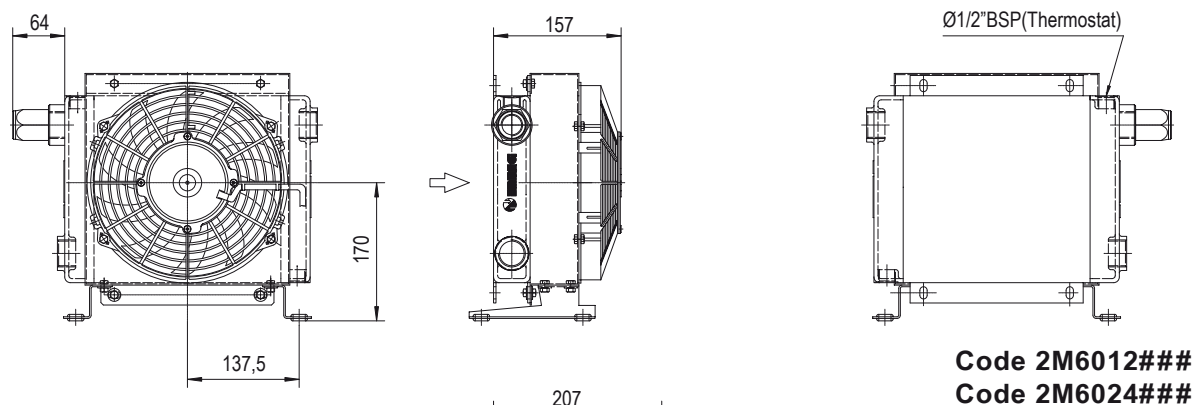


53




ÉCHANGEURS DE TEMPÉRATURE MG-AIR SÉRIE K BY-PASS



54



Les dimensions et caractéristiques techniques sont données à titre indicatif.

Code	V	Hz	kW(±10%)	A (±10%)	Tr/min	ø Hélice	dB(A)	(m³/h)	IP	Litres	Kg
2M6001 ###	230AC	50/60	0,050/0,061	0,24 - 0,28	2740/3120	200	68	700	44	0,5	7
2M6003 ###	230-400 AC	50	0,068	0,29 - 0,17	2500	200	69	720	44		7
	230-400 AC	60	0,070	0,23 - 0,13	2650	200	61	415	55		10
2M6004 ###	230-400 AC B14	50	0,25	1,7 - 1	1350	200	61	415	55		10
	265-460 AC B14	60	0,29	1,7 - 1	1620	200	61	415	55		10
2M6012 ###	12 DC	/	0,08	6,4	2770	225	72	790	68		6,5
2M6024 ###	24 DC	/	0,09	3,9	2900	225	73	865	68		6,5
2M6056 ###	Préparé pour moteur hydraulique Gr.2					200			/		6


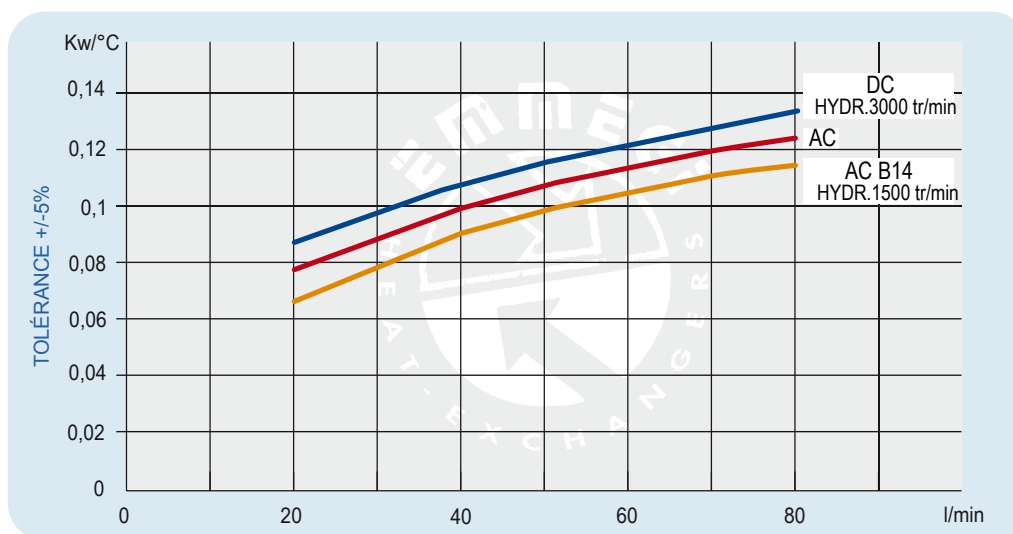
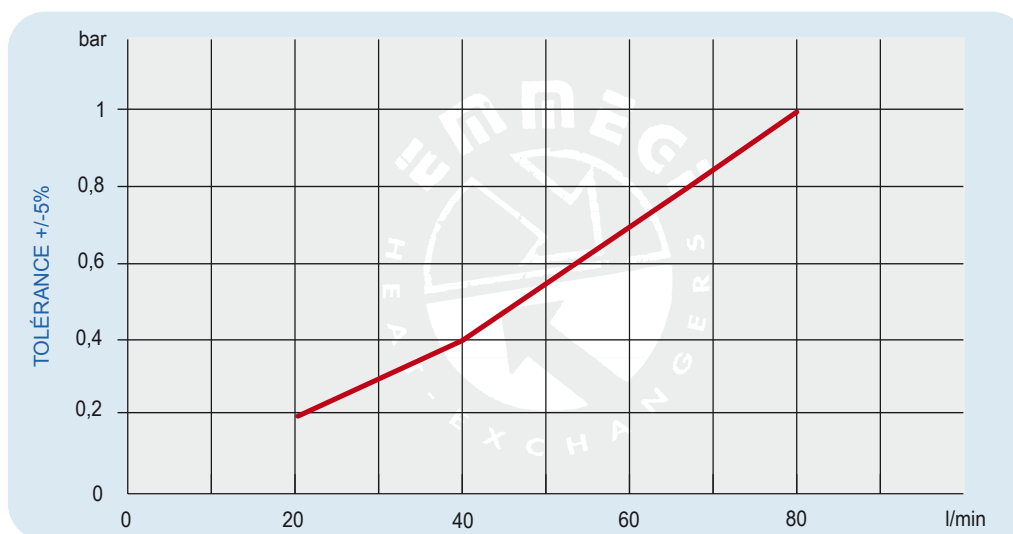
 Nous contacter

Diagramme de performances

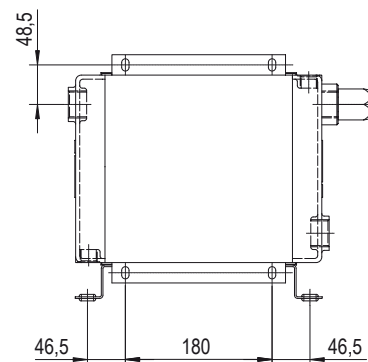
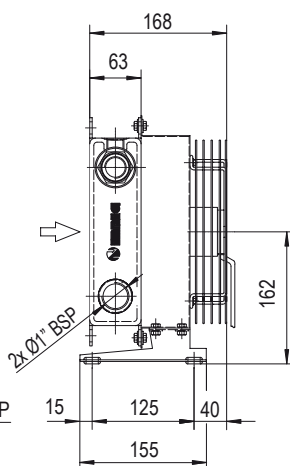
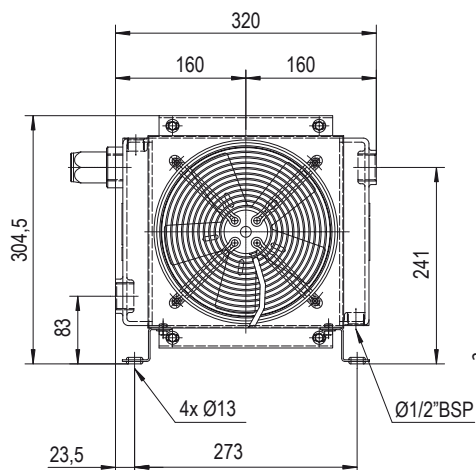


Pertes de charge (ISO VG 32)

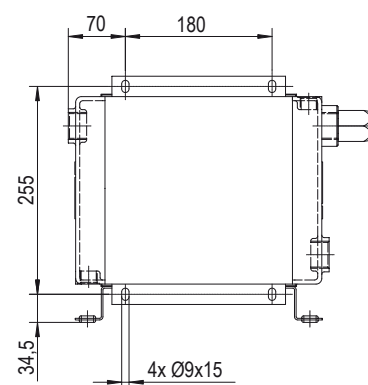
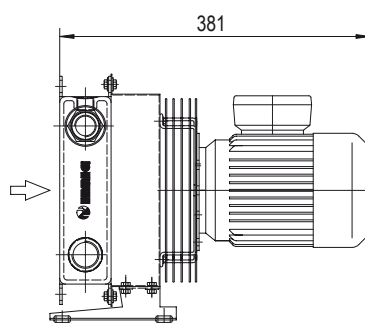
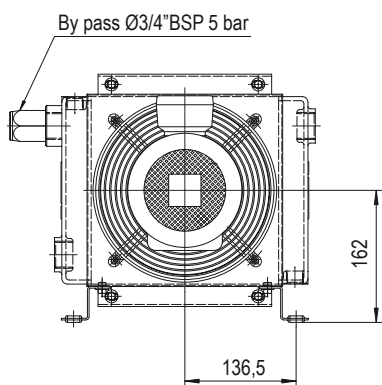


Facteur de correction - F (pertes de charge)

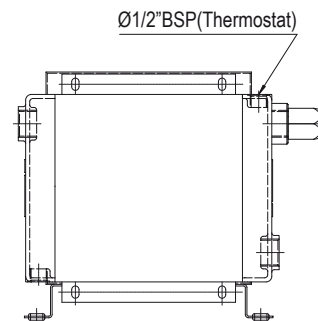
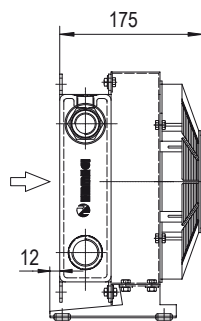
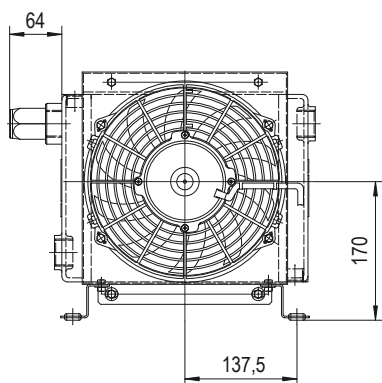
cst	10	15	20	30	40	50	60	80	100	200	300
F	0,5	0,65	0,77	1	1,2	1,4	1,6	1,9	2,1	3,3	4,3



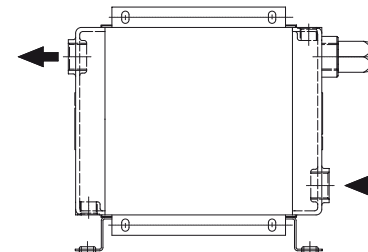
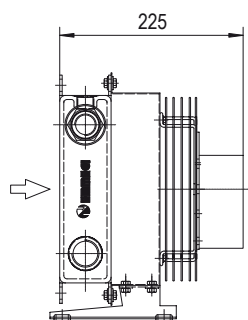
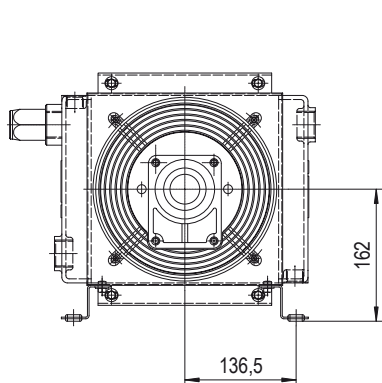
Code 2M6101###
Code 2M6103###



Code 2M6104###






Code 2M6112###
Code 2M6124###



Code 2M6156###

Les dimensions et caractéristiques techniques sont données à titre indicatif.

Code	V	Hz	kW(±10%)	A (±10%)	Tr/min	ø Hélice	dB(A)	(m³/ h)	IP	Litres	Kg
2M6101 ###	230AC	50/60	0,050 - 0,061	0,24 - 0,28	2740/3120	200	68	675	44	0,7	8
2M6103 ###	230-400 AC	50	0,068	0,29 - 0,17	2500	200	68	645	44		8
	230-400 AC	60	0,070	0,23 - 0,13	2650						
2M6104 ###	230-400 AC B14	50	0,25	1,7- 1	1350	200	64	390	55		11
	265-460 AC B14	60	0,29	1,7- 1	1620						
2M6112 ###	12 DC	/	0,08	6,4	2770	225	72	720	68		7
2M6124 ###	24 DC	/	0,09	3,9	2900	225	72	750	68		7
2M6156 ###	Préparé pour moteur hydraulique Gr.2					200			/		7


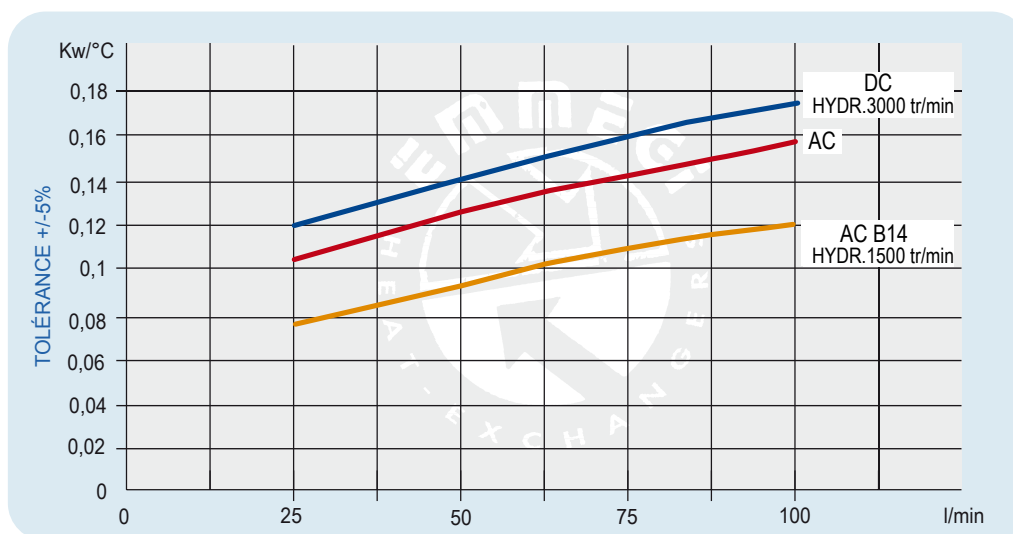
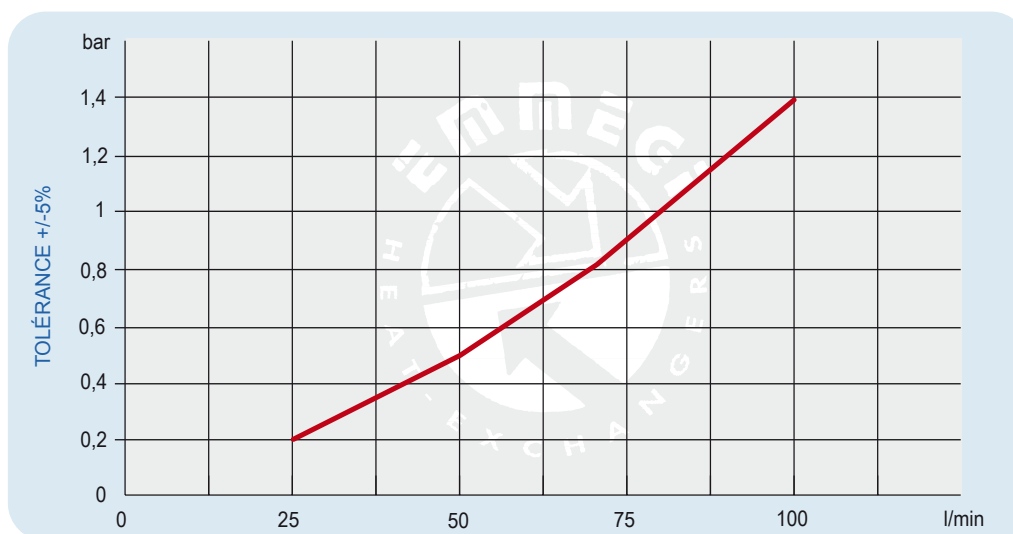
 Nous contacter

Diagramme de performances

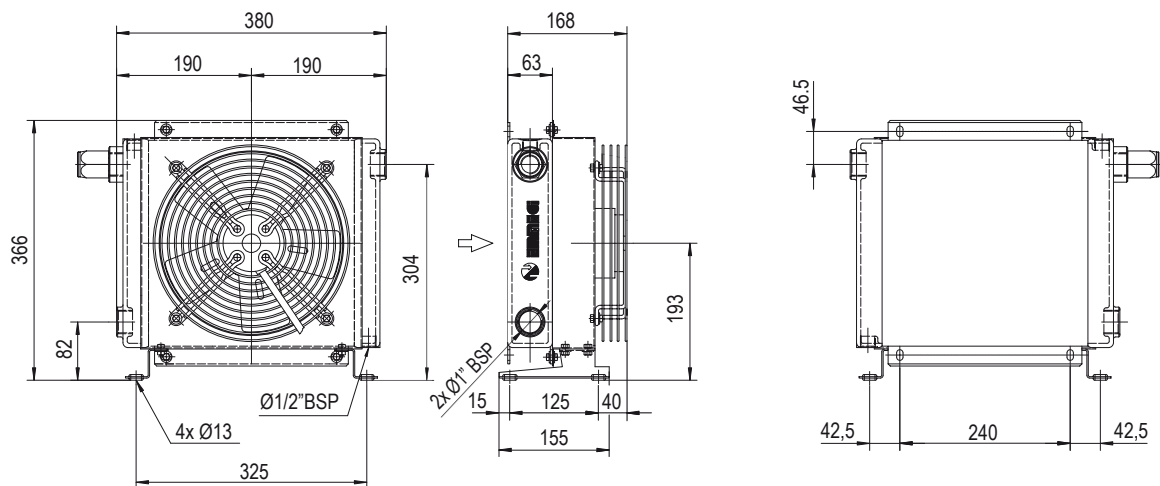


Pertes de charge (ISO VG 32)

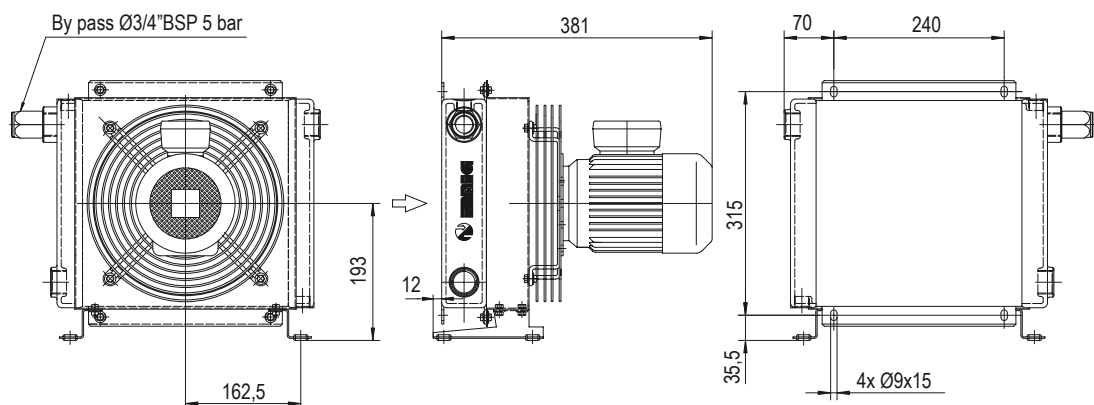


Facteur de correction - F (pertes de charge)

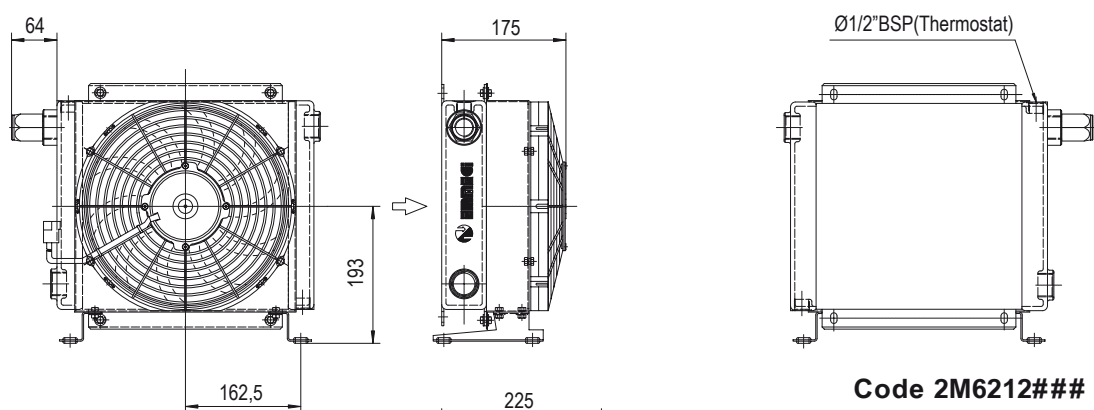
cst	10	15	20	30	40	50	60	80	100	200	300
F	0,5	0,65	0,77	1	1,2	1,4	1,6	1,9	2,1	3,3	4,3



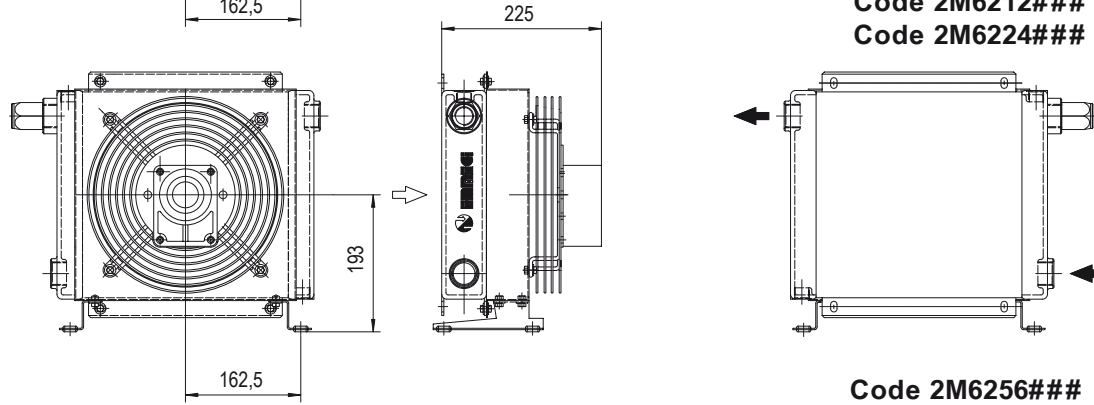
Code 2M6201###
Code 2M6203###



Code 2M6204###






Code 2M6212###
Code 2M6224###



Code 2M6256###

Les dimensions et caractéristiques techniques sont données à titre indicatif.

Code	V	Hz	kW	A	Tr/min	ø Hélice	dB(A)	(m³/ h)	IP	Litres	Kg
2M6201 # # #	230AC	50/60	0,115/0,15	0,51 - 0,66	2450/2600	250	72	1350	44	1	11
2M6203 # # #	230-400 AC	50	0,105	0,33 - 0,19	2600	250	72	1300	44		11
	230-400 AC	60	0,145	0,39 - 0,23	2900						
2M6204 # # #	230-400 AC B14	50	0,25	1,7- 1	1350	250	64	1000	55		16
	265-460 AC B14	60	0,29	1,7- 1	1620						
2M6212 # # #	12 DC	/	0,09	7,5	2710	280	72	950	68		10
2M6224 # # #	24 DC	/	0,10	4,3	2765	280	74	1030	68		10
2M6256 # # #	Préparé pour moteur hydraulique Gr.2					250			/		10


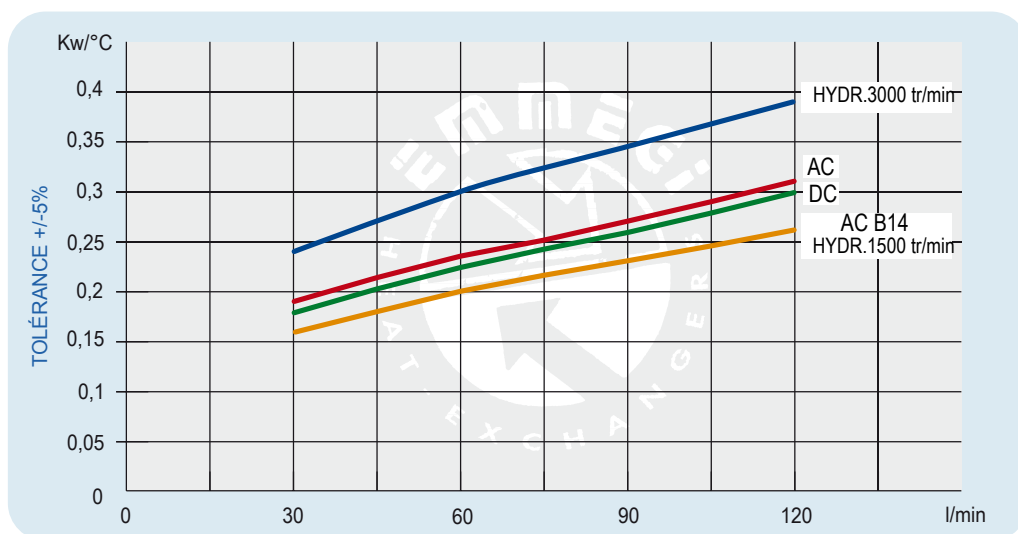
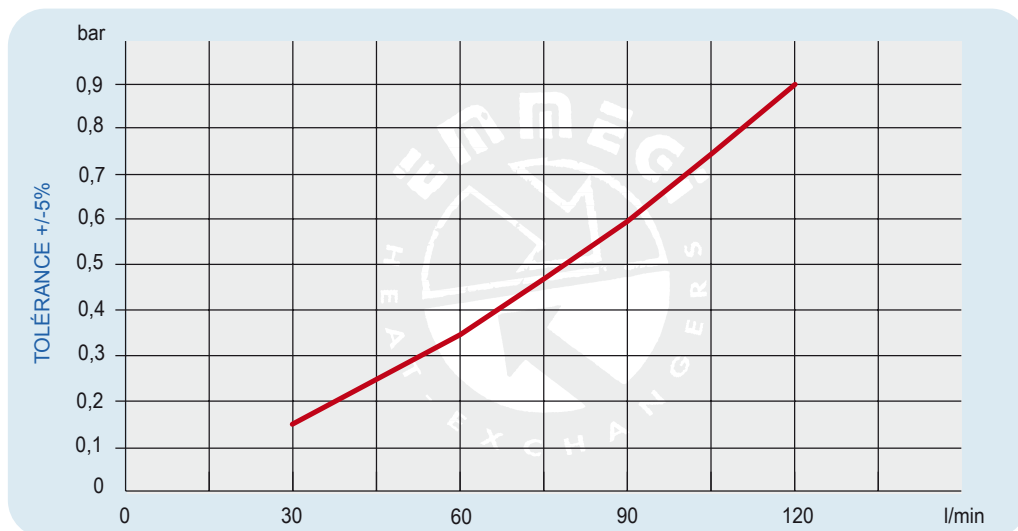
 Nous contacter

Diagramme de performances

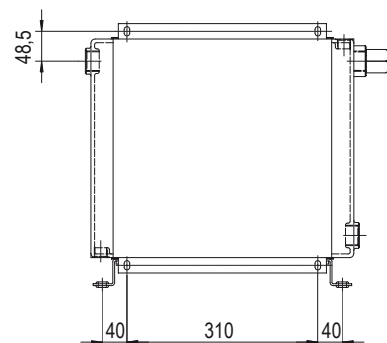
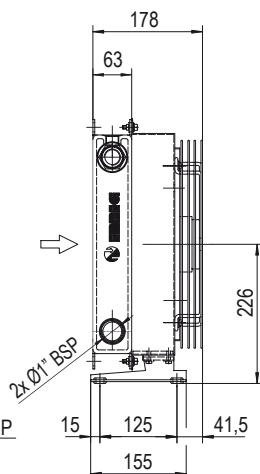
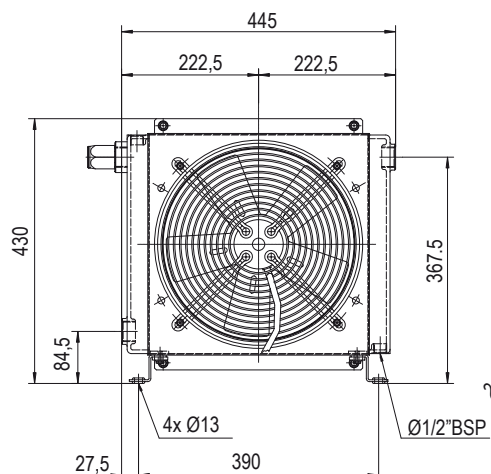


Pertes de charge (ISO VG 32)

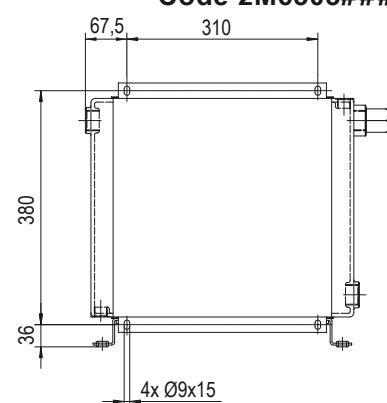
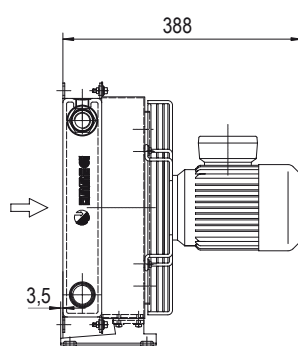
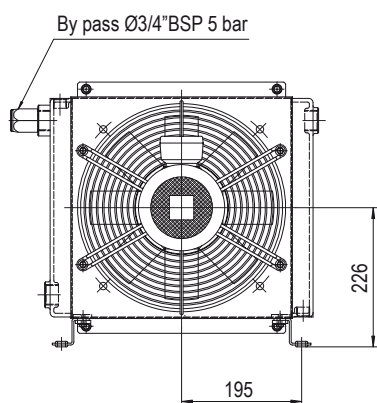


Facteur de correction - F (pertes de charge)

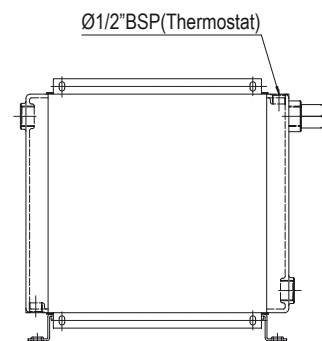
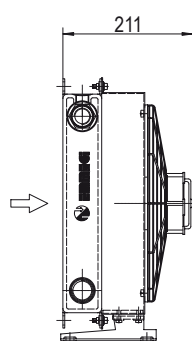
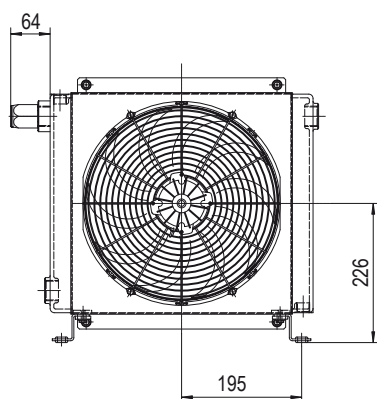
cst	10	15	20	30	40	50	60	80	100	200	300
F	0,5	0,65	0,77	1	1,2	1,4	1,6	1,9	2,1	3,3	4,3



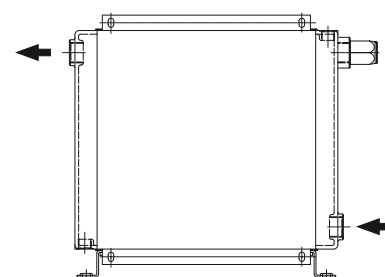
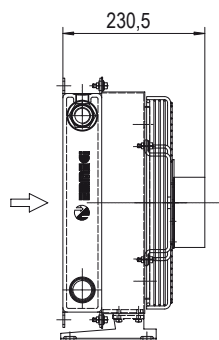
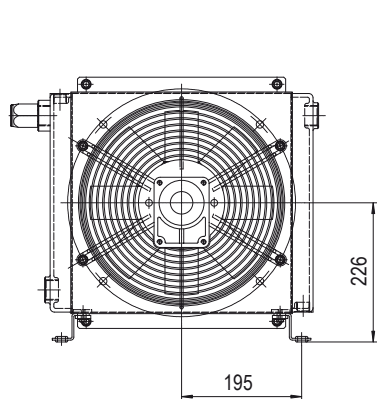
Code 2M6301###
Code 2M6303###



Code 2M6304###






Code 2M6312###
Code 2M6324###



Code 2M6356###

Les dimensions et caractéristiques techniques sont données à titre indicatif.

Code	V	Hz	kW	A	Tr/min	ø Hélice	dB(A)	(m³/ h)	IP	Litres	Kg
2M6301 ###	230AC	50/60	0,23-0,35	1,1 - 1,55	2700/3000	300	78	2220	44	1,6	15
2M6303 ###	230-400 AC	50	0,21	0,62 - 0,36	2580	300	76	2500	44		15
	230-400 AC	60	0,30	0,84 - 0,48	2750						
2M6304 ###	230-400 AC B14	50	0,37	2,1 - 1,1	1370	300	70	1850	55		20
	265-460 AC B14	60	0,43	2,1 - 1,1	1650						
2M6312 ###	12 DC	/	0,16	13,3	2660	305	80	1675	68		14
2M6324 ###	24 DC	/	0,18	7,4	2870	305	83	1880	68		14
2M6356 ###	Préparé pour moteur hydraulique Gr.2					300			/		15


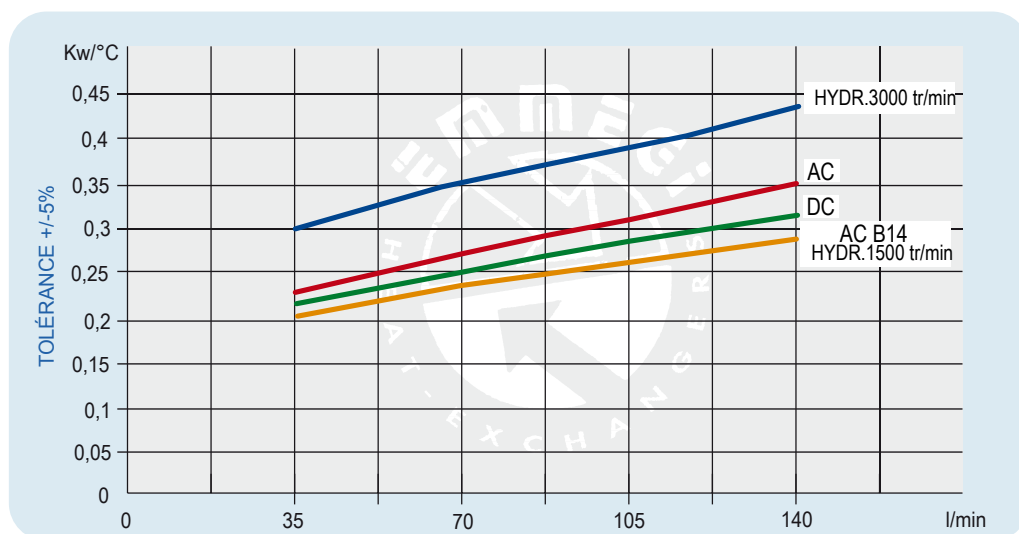
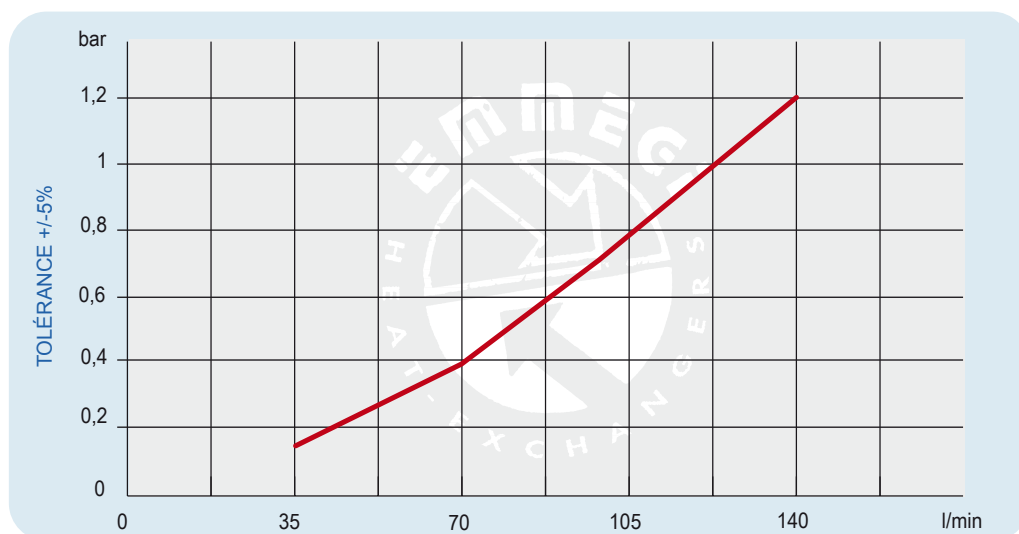
 Nous contacter

Diagramme de performances

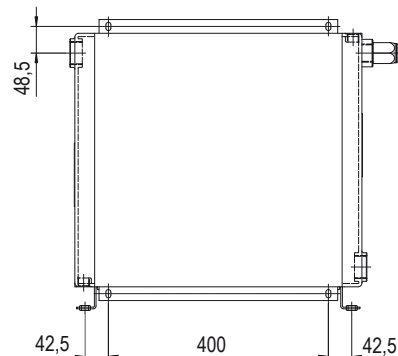
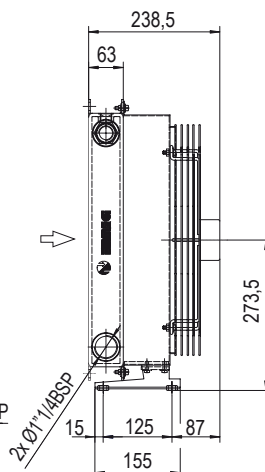
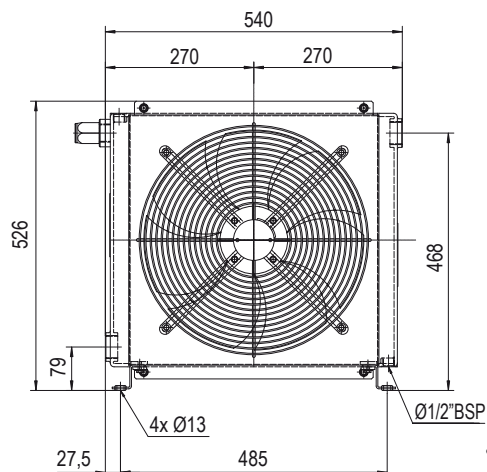


Pertes de charge (ISO VG 32)

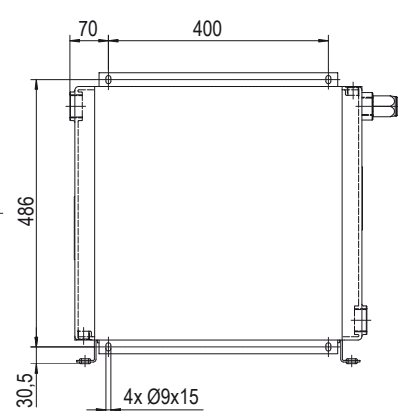
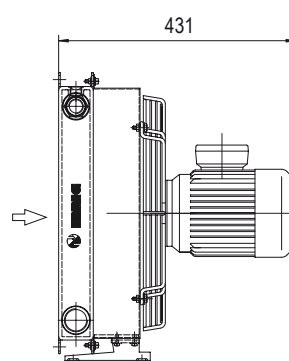
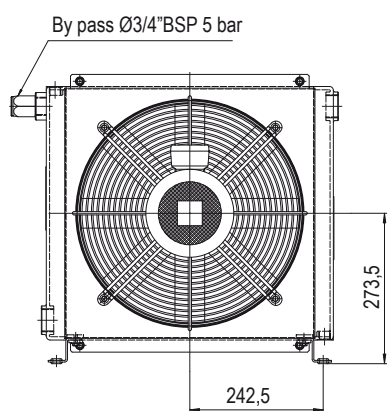


Facteur de correction - F (pertes de charge)

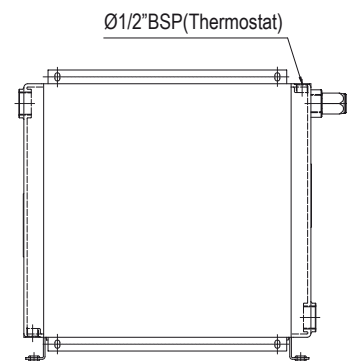
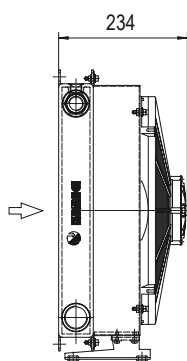
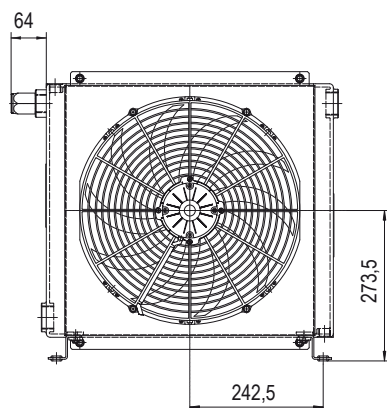
cst	10	15	20	30	40	50	60	80	100	200	300
F	0,5	0,65	0,77	1	1,2	1,4	1,6	1,9	2,1	3,3	4,3



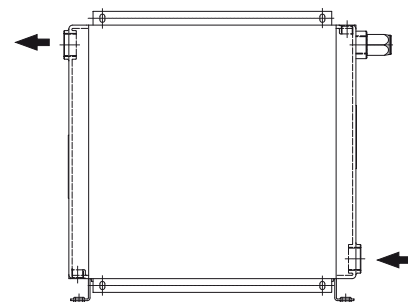
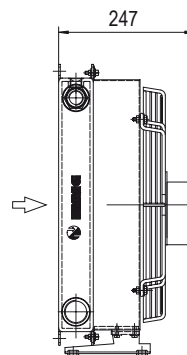
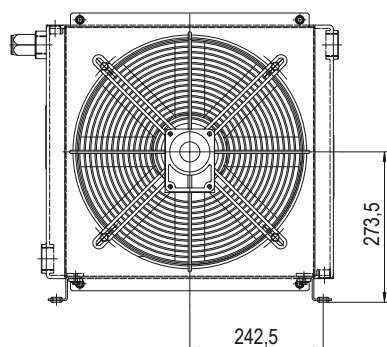
Code 2M6401###
Code 2M6403###



Code 2M6404###






Code 2M6412###
Code 2M6424###



Code 2M6456###

Les dimensions et caractéristiques techniques sont données à titre indicatif.

Code	V	Hz	KW	A	Tr/min	ø Hélice	dB(A)	(m³/h)	IP	Litres	Kg
2M6401 ###	230 AC	50	0,16/0,24	0,73 - 1,06	1430/1700	400	71	3200	54	2,7	21
	230-400 AC	50	0,135	0,76 - 0,44	1450						
2M6403 ###	230-400 AC	60	0,185	0,68 - 0,39	1690	400	71	3200	54		21
2M6404 ###	230-400 AC B14	50	0,55	2,9 - 1,7	1320	400	77	3740	55		25
	265-460 AC B14	60	0,63	2,9 - 1,7	1690						
2M6412 ###	12 DC	/	0,22	19,2	2310	385	76	2770	68		20
2M6424 ###	24 DC	/	0,23	9,3	2380	385	79	2910	68		20
2M6456 ###	Préparé pour moteur hydraulique Gr.2					400			/		19


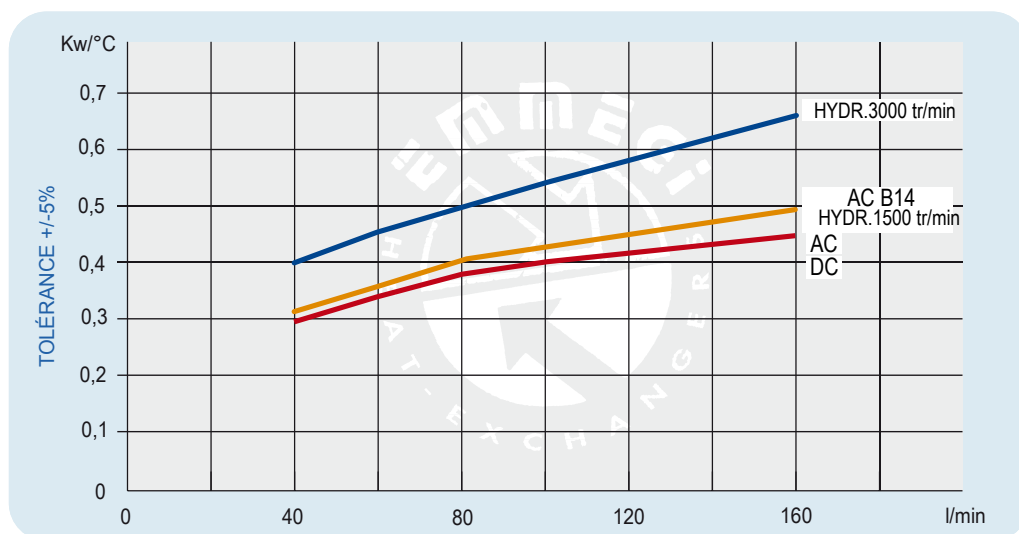
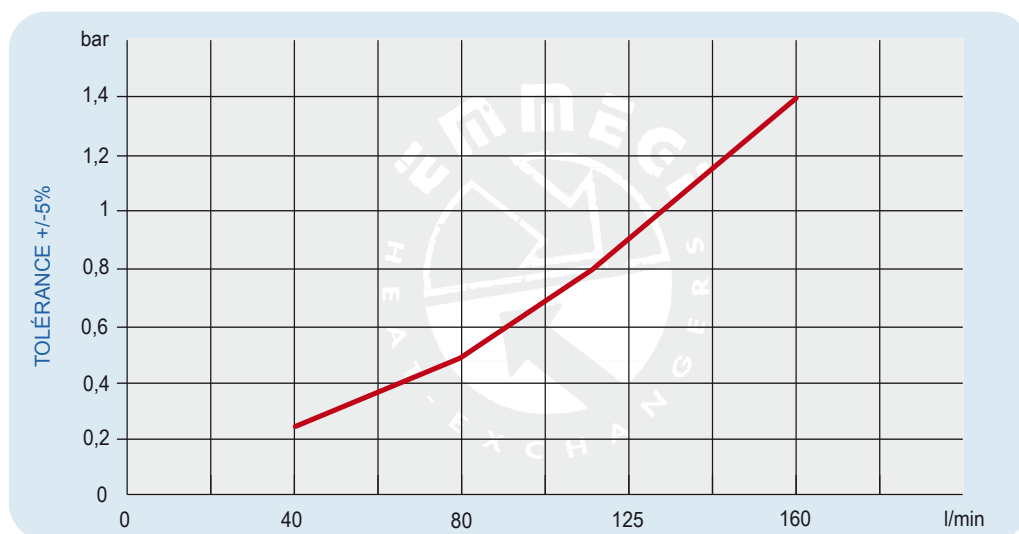
 Nous contacter

Diagramme de performances



Pertes de charge (ISO VG 32)



Facteur de correction - F (pertes de charge)

cst	10	15	20	30	40	50	60	80	100	200	300
F	0,5	0,65	0,77	1	1,2	1,4	1,6	1,9	2,1	3,3	4,3

